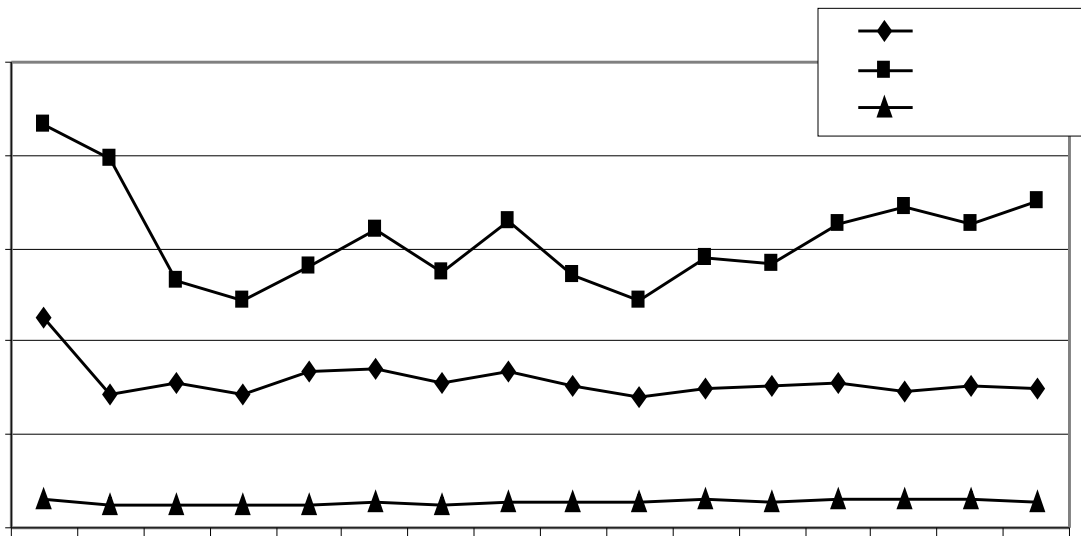
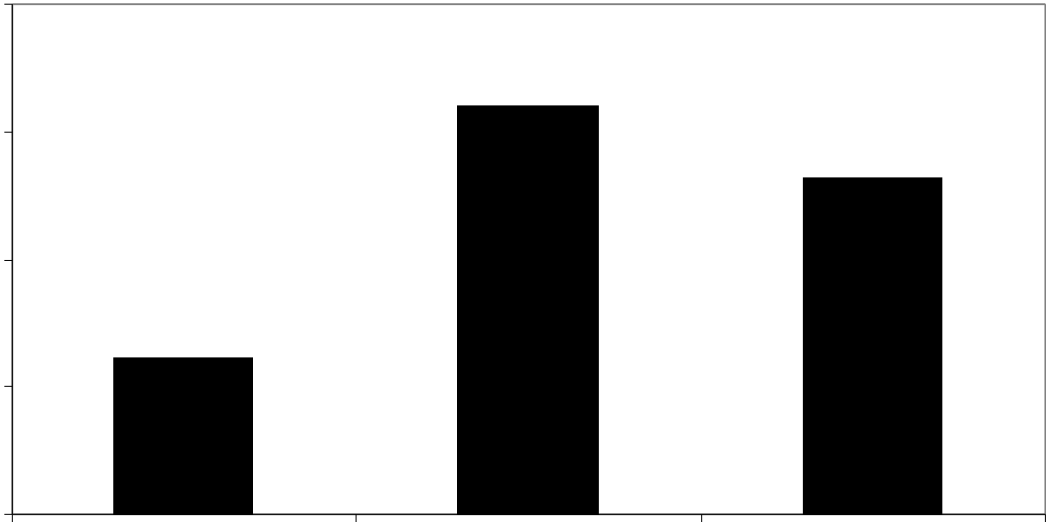
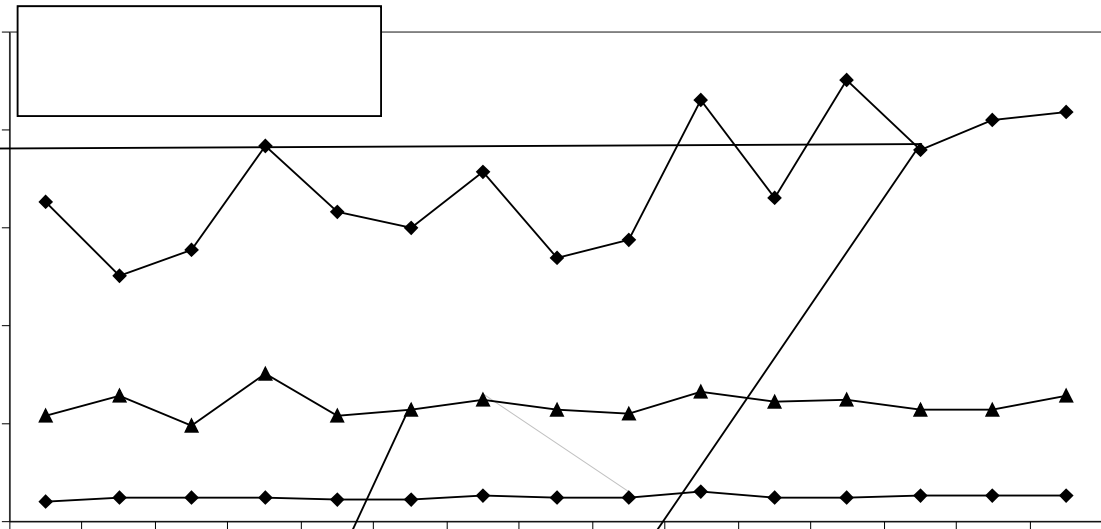


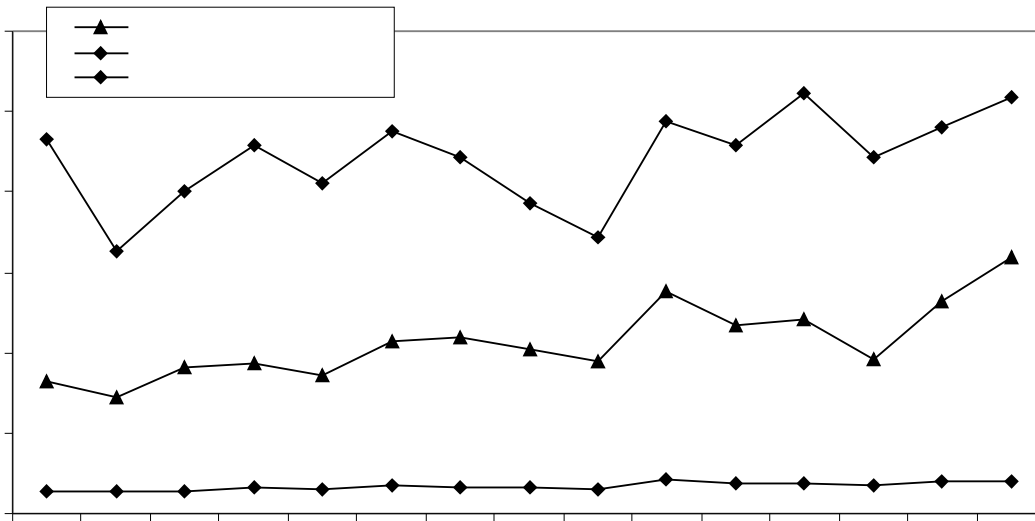
Sugar Maple Health

The general condition of maple stands was monitored as part of the *Maple Health Assessment*, with over 1300 overstory (canopy) sugar maple trees evaluated for a variety of indicators of health. The percent of healthy sugar maple trees remained constant in 2003, with 91% of overstory trees rated as healthy. Canopy transparency has remained elevated above 15% since 2000 (2000-2003), attributable to several factors. Spruce spanworm and a combination of other defoliating insects have been active over the past several years. In 2003, 21% of 100 sites had trees with moderate to heavy defoliation, affecting an average of 13% of trees across all plots (2000-2003). Some locations have experienced multiple years of defoliation, which may result in long-term health problems. No any locations are also impacted by drought stress, which has affected different parts of the state since 2000.









Trend in #each condition on 'orth (merican) aple *ro.ect *lots in / ermont, 1909-2003.

